



Delegated Decisions by Cabinet Member for SEND Improvement

***Wednesday, 13 December 2023 at 12.00 pm
Room 3 - County Hall, New Road, Oxford OX1 1ND***

If you wish to view proceedings, please click on this [Live Stream Link](#).
However, that will not allow you to participate in the meeting.

Items for Decision

The items for decision under individual Cabinet Members' delegated powers are listed overleaf, with indicative timings, and the related reports are attached. Decisions taken will become effective at the end of the working day on 20 December 2023 unless called in by that date for review by the appropriate Scrutiny Committee.

Copies of the reports are circulated (by e-mail) to all members of the County Council.

These proceedings are open to the public

A handwritten signature in blue ink that reads "Reeves".

Martin Reeves
Chief Executive

December 2023

Committee Officer: **Democratic Services**
email: committeesdemocraticservices@oxfordshire.gov.uk

Note: *Date of next meeting: 17 January 2024*

If you have any special requirements (such as a large print version of these papers or special access facilities) please contact the officer named on the front page, but please give as much notice as possible before the meeting.

Items for Decision

1. Declarations of Interest

See guidance below.

2. Questions from County Councillors

Any county councillor may, by giving notice to the Proper Officer by 9 am two working days before the meeting, ask a question on any matter in respect of the Cabinet Member's delegated powers.

The number of questions which may be asked by any councillor at any one meeting is limited to two (or one question with notice and a supplementary question at the meeting) and the time for questions will be limited to 30 minutes in total. As with questions at Council, any questions which remain unanswered at the end of this item will receive a written response.

Questions submitted prior to the agenda being despatched are shown below and will be the subject of a response from the appropriate Cabinet Member or such other councillor or officer as is determined by the Cabinet Member, and shall not be the subject of further debate at this meeting. Questions received after the despatch of the agenda, but before the deadline, will be shown on the Schedule of Addenda circulated at the meeting, together with any written response which is available at that time

3. Petitions and Public Address

Members of the public who wish to speak at this meeting can attend the meeting in person or 'virtually' through an online connection.

Requests to speak must be submitted by no later than 9am four working days before the meeting. Requests to speak should be sent to committeesdemocraticservices@oxfordshire.gov.uk .

If you are speaking 'virtually', you may submit a written statement of your presentation to ensure that if the technology fails, then your views can still be taken into account. A written copy of your statement can be provided no later than 9 am 2 working days before the meeting. Written submissions should be no longer than 1 A4 sheet.

4. Recommissioning the Community Short Breaks Contracts (Pages 1 - 26)

Forward Plan Ref: 2023/184

Contact: Charlotte Davey, Head of Disabled Children's Services, charlotte.davey@oxfordshire.gov.uk; Sarah Roberts Commissioning Officer, 07720 167761, sarah.roberts@oxfordshire.gov.uk

Report by Corporate Director Children's Services

The Cabinet Member is RECOMMENDED to delegate authority to the Corporate Director for Children's Services, in consultation with the Deputy Monitoring Officer and Head of Legal, to award contracts to the value of the agreed budget following the completion of the procurement process for the recommissioning of the Overnight Residential Short Breaks for Disabled Children, to enable new contracts to be in place for 1st April 2024.

Councillors declaring interests

General duty

You must declare any disclosable pecuniary interests when the meeting reaches the item on the agenda headed 'Declarations of Interest' or as soon as it becomes apparent to you.

What is a disclosable pecuniary interest?

Disclosable pecuniary interests relate to your employment; sponsorship (i.e. payment for expenses incurred by you in carrying out your duties as a councillor or towards your election expenses); contracts; land in the Council's area; licenses for land in the Council's area; corporate tenancies; and securities. These declarations must be recorded in each councillor's Register of Interests which is publicly available on the Council's website.

Disclosable pecuniary interests that must be declared are not only those of the member her or himself but also those member's spouse, civil partner or person they are living with as husband or wife or as if they were civil partners.

Declaring an interest

Where any matter disclosed in your Register of Interests is being considered at a meeting, you must declare that you have an interest. You should also disclose the nature as well as the existence of the interest. If you have a disclosable pecuniary interest, after having declared it at the meeting you must not participate in discussion or voting on the item and must withdraw from the meeting whilst the matter is discussed.

Members' Code of Conduct and public perception

Even if you do not have a disclosable pecuniary interest in a matter, the Members' Code of Conduct says that a member 'must serve only the public interest and must never improperly confer an advantage or disadvantage on any person including yourself' and that 'you must not place yourself in situations where your honesty and integrity may be questioned'.

Members Code – Other registrable interests

Where a matter arises at a meeting which directly relates to the financial interest or wellbeing of one of your other registerable interests then you must declare an interest. You must not participate in discussion or voting on the item and you must withdraw from the meeting whilst the matter is discussed.

Wellbeing can be described as a condition of contentedness, healthiness and happiness; anything that could be said to affect a person's quality of life, either positively or negatively, is likely to affect their wellbeing.

Other registrable interests include:

- a) Any unpaid directorships

- b) Any body of which you are a member or are in a position of general control or management and to which you are nominated or appointed by your authority.
- c) Any body (i) exercising functions of a public nature (ii) directed to charitable purposes or (iii) one of whose principal purposes includes the influence of public opinion or policy (including any political party or trade union) of which you are a member or in a position of general control or management.

Members Code – Non-registrable interests

Where a matter arises at a meeting which directly relates to your financial interest or wellbeing (and does not fall under disclosable pecuniary interests), or the financial interest or wellbeing of a relative or close associate, you must declare the interest.

Where a matter arises at a meeting which affects your own financial interest or wellbeing, a financial interest or wellbeing of a relative or close associate or a financial interest or wellbeing of a body included under other registrable interests, then you must declare the interest.

In order to determine whether you can remain in the meeting after disclosing your interest the following test should be applied:

Where a matter affects the financial interest or well-being:

- a) to a greater extent than it affects the financial interests of the majority of inhabitants of the ward affected by the decision and;
- b) a reasonable member of the public knowing all the facts would believe that it would affect your view of the wider public interest.

You may speak on the matter only if members of the public are also allowed to speak at the meeting. Otherwise you must not take part in any discussion or vote on the matter and must not remain in the room unless you have been granted a dispensation.

This page is intentionally left blank

Divisions Affected – N/A

CABINET MEMBER for SEND Improvement

13 December 2023

Recommissioning of the Community Short Breaks for Disabled Children for 1 April 2024

Report by Corporate Director of Children's Services

RECOMMENDATION

The Cabinet Member is RECOMMENDED

To delegate authority to the Corporate Director for Children's Services, in consultation with the Deputy Monitoring Officer and Head of Legal, to award contracts to the value of the agreed budget following the completion of the procurement process for the recommissioning of the Overnight Residential Short Breaks for Disabled Children, to enable new contracts to be in place for 1st April 2024.

Executive Summary

1. The Local Authority has a statutory responsibility in the Children and families Act 2014 to provide short breaks for Disabled Children which will support their family life as part of the Oxfordshire local offer. Under the Children Act 1989 and in the Breaks for Carers of Disabled Children Regulations 2011, the local authority has a duty to provide support to Disabled Children through short break arrangements as far as is reasonably practicable.
2. The Disabled Children's Team support only children with the highest need and without the availability of short break activities, many more children would require support from the Local Authority. Community Short Breaks will enable improved outcomes for children, young people, and families through a range of person-centred activities. Community Short Breaks also provide parents and carers with meaningful breaks from their caring responsibilities, so they are empowered to look after their own emotional and physical health and provide better and more sustainable care to their whole family.
3. Through the commissioning of Community Short Breaks, the council seeks to ensure the local availability of services to meet the needs of disabled children in Oxfordshire. The contracts awarded will provide provision across Oxfordshire in areas identified in the recommissioning process. The current contracts for Community Short Breaks will expire on the 31 March 2024. These contracts have been running for 7 years with no uplift included.

4. A comprehensive needs assessment was carried out using data from the disability register, feedback from families collated by the Short Breaks Team, feedback from providers, co-production and engagement with Oxfordshire Parent Carer Forum and two provider engagement events held in March and June 2023.
5. As a result of the needs assessment an updated specification was developed to address the needs identified, using the budget effectively. This included the identification of key delivery areas and several Lots, including after school, evening, holiday and weekend activities and a Lot to provide community short breaks for autistic CYP without a learning disability. We acknowledged the updated needs assessment identified some potential changes in the current provision.
6. As part of the tender process 14 providers submitted bids to provide Community Short Breaks across all 4 Lots and in delivery areas across Oxfordshire. Contracts have been allocated for the full value of the budget (£1,137,870) to preferred bidders.

Project Context

7. The Council has a statutory responsibility to provide short-breaks¹ for disabled children and young people which will support their family life as part of the Local Offer². Under the Children Act 1989 and in the Breaks for Carers of Disabled Children Regulations 2011, the authority has a duty to provide support to Disabled Children through short break arrangements as far as is reasonably practicable. Disabled Children receiving short breaks have received a children and family assessment to identify their need for short breaks, and these are reviewed every 3-6 months in the Child in Need review. Children receiving short breaks are Children in Need (Section 17, Children Act 1989).
8. The Council provides a range of short breaks for Disabled Children and this kind of care is essential to support Disabled Children to live at home. It is well-recognised that raising a child with a disability can place additional pressures on families which exceed the everyday pressures faced by all families raising children. This pressure can arise because of the complexity of the social, education and health care needs experienced by a disabled child, as well as the limitations of some mainstream services which are unable to provide the necessary support to meet the needs of disabled children and young people. The short breaks services provide preventative support and measures to help families manage with limited Social Care support.
9. As from the 31st August 2023, there were 4440 children and young people on the disability register for children aged 0-18 years living in Oxfordshire, and

¹ Short Breaks Duties - Children's Act 1989 and Breaks for Carers of Disabled Children Regulations 2011.

² 'Local Offer' - Local Authorities are required to publish information about the support and facilities that families can expect to find in their area for children and young people (aged 0-25) who have special educational needs and disabilities. (Children and Families Act 2014)

commissioning of community short breaks contracts ensures Oxfordshire County Council (OCC) continues to meet the needs of vulnerable children and young people. The provision forms part of the continuum of support available to children with special educational needs in local areas.

10. Short breaks should be used to enhance the ability of parents to care for their disabled child and any other children they may have. In performing its duty under the Short Breaks Regulations, the local authority considers a broad spectrum of families and family circumstances and families should not have to reach crisis point before they receive a short break. A survey completed in 2016 and in 2022, demonstrated the importance of community short breaks in providing invaluable support for families.
11. Families have also told us how important the community short breaks services are to them, and if these services are not provided, there is a risk of family breakdown and children potentially being bought into care of the Local Authority and more support is needed to access activities, including specialist activities in the community.

Service

12. The number of children on the Disability Register is increasing and we know from our current providers that demand for Community Short Breaks is high with waiting lists in operation. Many providers are having to limit the number of sessions available to children and young people to ensure there is a service available to as many families as possible.
13. To meet their legal responsibilities OCC originally awarded contracts to the current providers to deliver community short breaks seven years ago (5+2 years). The total budget value was £1,053,283 per annum. Over the lifetime of the contracts staffing and running costs have significantly increased, and there has been no inflationary uplift since 2017, therefore limiting the amount of provision being delivered.

Needs Assessment

14. A full review of the data available in the disabilities register has been undertaken with the following outputs.
15. Heat map showing Registered Disabled Children in Oxfordshire (Appendix 1)
This has informed the identification of delivery areas (Appendix 2) with localities in delivery area 1 requiring the most provision; localities in delivery area 2 requiring provision but not to the same extent as delivery area 1; and delivery area 3 requiring some provision to support a smaller number of children. The allocation of contracts reflects the amount of provision identified.
16. Detailed breakdown of the specific population needs in each of the localities identified (Appendix 3)

The data summary for each of our identified localities was made available to providers so their bids could be tailored to the place in when they will be provided. This has been considered when allocating contracts.

17. Evidence from providers as part of their contract monitoring and during provider engagement sessions held in person, identified the following key themes:
 - Providers are oversubscribed, holding waiting lists and managing access to provision is challenging.
 - Providers are facing increasing costs for service delivery.
18. The views of the families of children with SEND influenced the planning and design of services for 1st April 2024 onwards, to support improved outcomes for children and young people with SEND. Feedback has also been sought from families and Oxfordshire Parent Carers Forum has also been involved in the working group and supported and co-produced the re-tendering process. Families have told us that:
 - There are limited weekend activities available to support families.
 - There is a need to support autistic children and young people that do not have a learning disability. The current provision does not meet their needs well.
 - There is a lack of easy to access provision available and more services are needed for those children and young people with lower needs.
 - There is not enough local provision, choice, or variety for families.
 - More support is needed to access activities, including specialist activities in the community.
 - Families cannot access provision they would like to as the child/young person does not meet the needs/criteria to attend.
 - We need to be better at communicating what services are available to families as families are not aware of what is available, and a directory of service would help.
 - Whilst some of the provision available is excellent, there are some that could do better.
19. The needs assessment highlighted the increased demand for the current Community Short Breaks Service. This has resulted in the recommissioning of similar services for after school and school holiday provision with the addition weekend activities.
20. As part of the needs assessment carried out through the recommissioning process, a significant need was identified for provision suitable for autistic children and young people without a learning disability. For this cohort of children and young people the current offer is not well suited to this identified need. As a result, a Lot has been developed for this specific group of children and young people that will meet this need and add to the overall offer of Short Breaks provision in Oxfordshire.
21. Contracts will be awarded across Lots in the new Community Short Breaks Contracts.

- Lot 1, After school activities.
 - Lot 2, Weekend and school holidays activities,
 - Lot 3 Evening activities
 - Lot 4, Activities for autistic children and young people, without a learning disability.
22. The tender invited potential providers to submit an offer of provision and the number of hours that would be available for the price submitted. This has enabled us to ensure the most competitive price for good quality activities in the places we need them.
23. The specification for the Community Short Breaks Tender also focuses on the quality of activities provided. This has been continued through the award process and will be key component in the contract between OCC and the preferred bidders. Good quality activities have been defined as:
- Develop positive and effective relationships.
 - Be engaging, co-produced with CYP, and meeting the needs of CYP.
 - Enable development of transferable life skills
 - Promote independence and self-confidence.
 - Improve social, emotional and mental health to contribute to emotional well-being.
 - Provide innovative, flexible opportunities for improved outcomes.
24. The new block contracts will provide provision for the Lots and across the delivery areas identified, ensuring access to community short breaks and limiting the risk of lack of access to services where the need has been identified.

Strategic Outcomes

25. In the provision of this Service, the Provider will ensure individual outcomes for each child are available and is able to demonstrate the impact of the Service in delivering outcomes to improve the lives of disabled children, young people and their families.

The Service will also meet the following outcomes: Oxfordshire Local Area Special Educational Needs and Disability Strategy 2022-2027

<p>Strategic Objective 1 Improving outcomes for children with SEND</p>	<p>We want the Local Area to be equipped to effectively secure high-quality outcomes for children with SEND. High quality services that are accessed in a timely manner and at the earliest opportunity have a significant impact on outcomes for children and lay the foundations for better life chances.</p>
<p>Strategic Objective 2</p>	<p>There is a range of provision for children with SEND in Oxfordshire. It is essential that we</p>

Developing a continuum of local provision to meet the requirements of children and young people with SEND	develop more local provision so that more children have their holistic needs met within their own communities.
Strategic Objective 3 Good physical and mental health and wellbeing	We want healthy, happy children and young people who enjoy life. We will work in partnership with children and young people and their families to improve access to both the universal and specialised services they need.
Strategic Objective 4 Improving post-16 education, learning, employment, and training	All young people will have access to high quality provision in education, training, work experience, apprenticeships and study programmes that support them into meaningful, paid employment and provide them with skills for independent or supported living.
Strategic Objective 5 Positive move into adulthood for young people with SEND	All young people with SEND and their families should have a positive experience of moving into adulthood. We want young people with SEND to develop the skills, knowledge and confidence to have choice and control over their adult lives

Financial Implications

26. Contracts will be allocated, and the preferred bidders met all the evaluation criteria and provided costing of their proposed provision under each of the lots applied for.
27. The budget of £1,137,870 will be distributed across all Lots and be spread across Oxfordshire in the delivery areas identified as part of the needs assessment.
28. Whole life costs - The contracts awarded will be 3 years with the opportunity to extend for up to an additional 4 years (subject to further Key Decisions process).

Current budget re existing contract per annum (£)	Year 1 (£)	Year 2 (£)	Year 3 (£)	Total for 3 years (£)	Yr 3 Vs current
No uplift applied for the current contract. (7 years)	Including 8% uplift (£84,287 per annum)	Plus, uplift agreed as per the price review mechanism based on 4% (tbc)	Plus, uplift agreed as per the price review mechanism based on 2% (tbc)		
1,053,583	1,137,870	1,183,384	1,207,052	3,528,306	153,469

Comments checked by: Danny Doherty (Finance Business Partner, Interim)
Danny.Doherty@Oxfordshire.gov.uk

Legal Implications

29. The basis of the Council's statutory duty to provide these services is set out at paragraph 1 above. The procurement of the new services has followed a competitive tendering process in accordance with the Council's Contract Procedure Rules which themselves ensure that the Council is compliant with the Public Contracts Regulations 2015 (as amended). Legal Services has assisted with the preparation of the terms and conditions of the proposed contract.

Comments checked by: Jonathan Pool, Solicitor (Contracts)
jonathan.pool@oxfordshire.gov.uk

Staff Implications

22. There are no new or additional implications and staff resource is included in the project

Equality & Inclusion Implication

23. As there are existing services, the recommissioning process and award of tender do not negatively impact on the disabled children and families in Oxfordshire.

Risk Management

24. As part of the recommissioning process, see below a summary of the Risks and Mitigations in place.

	Risk	Impact 0-5	Likelihood	Mitigation
1	Original budget limitations	5	medium	Fully costed model was included in the original business case and an increase in budget was requested to offset the lack of any uplift in the original contract value for 7 years.
2	Lack of uplift for the duration of the last contract/s and increased provider costs, has limited what can be provided for within the current financial envelope for services from 1/4/24	5	medium	New specification in place that includes options for innovation for how services are delivered. This also enables options for flexibility in allocating funding across Oxfordshire and in using the budget as effectively as possible and "daring to do things differently"

3	Reduction in allocation of budget may cause some providers to withdraw their bids, as they will not be able to provide for tendered services within the financial envelope resulting in gaps in service delivery	5	High	Discussion with providers on Contract Award.
4	Reduction in allocation of budget may cause some providers to be financially at risk	5	high	Discussion with providers on Contract Award.
5	New services/contracts in place from 1 st April 2024 may result in existing contracts ending as from 31 st March 2024	4	high	Services/new specification designed on needs analysis etc. Communication plan in place and CYP supported to access services within the community
6	Due to increased costs, a standstill budget would reduce the number of services being delivered.	5	high	Allocation of budget completed using the financial envelope as effectively as possible
7	Reputational damage if services are closed or reduced	4	high	Communication plan in place
8	Increased strain on the Children's Disability Teams as families will be at risk of crisis if reduced services are in place.	5	high	Support in place for the Children's Disability Service
9	Limited parent/carers engagement	3	low	Communication plan in place and Forum Member part of the Board/working groups
10	TUPE risks	4	medium	Tender documents included TUPE implications
11	Redundancy costs	1	low	OCC does not have any redundancy liabilities

NAME Anne Coyle
Interim Corporate Director for Children's Services

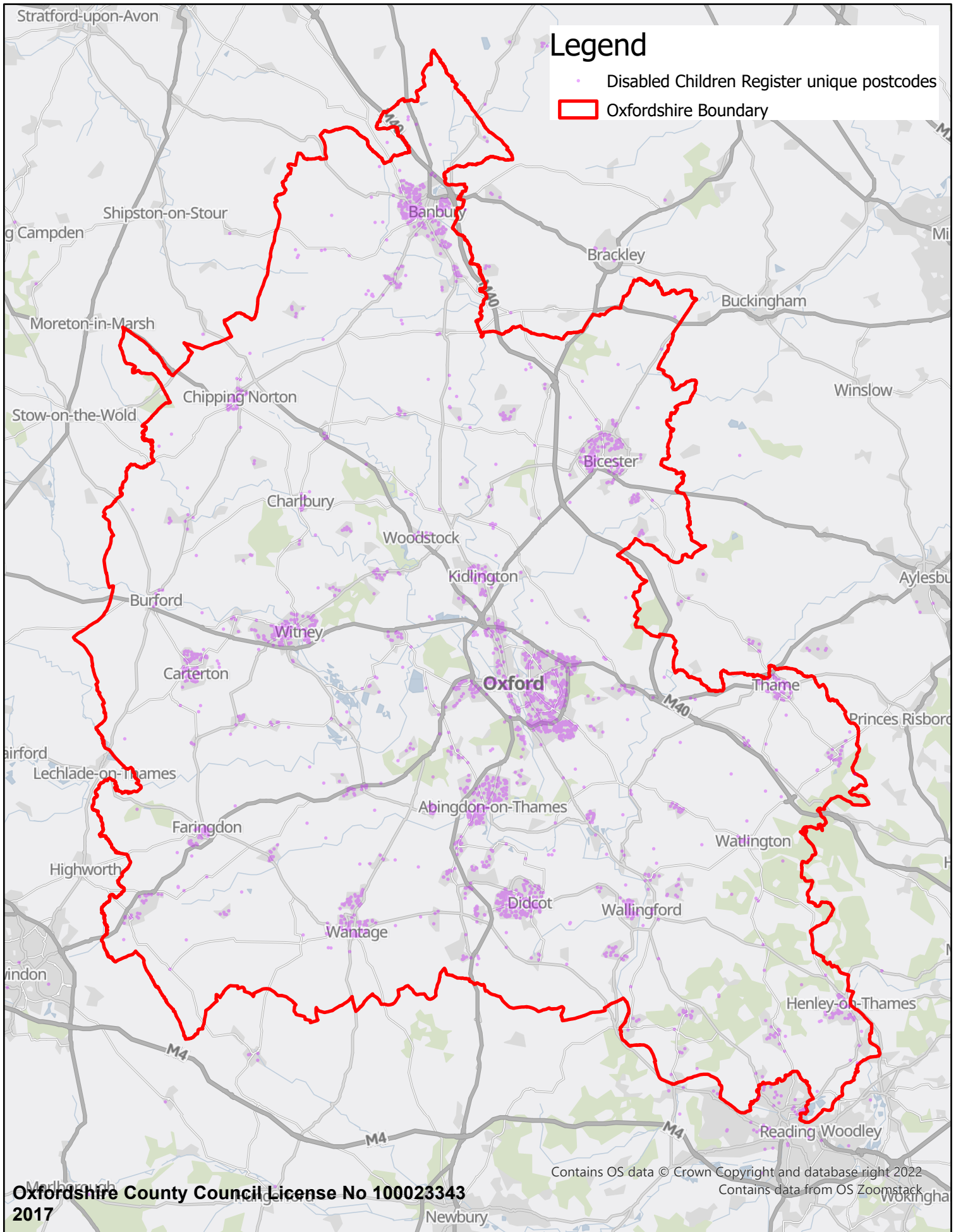
Appendices: Appendix 1 – Heat Map
Appendix 2 – Delivery Areas
Appendix 3 – Data sheets by locality

Background papers: Nil.

[Other Documents:] Nil

Contact Officer: Andrea Cochrane
SEND Commissioning Manager
Andrea.Cochrane@oxfordshire.gov.uk
Telephone number 07564 055881

November 2023



Registered disabled children in Oxfordshire.

This page is intentionally left blank

Appendix 2 - Community Short Breaks - Delivery Areas Identified

Delivery Area 1 Highest number of disabled children are in these areas	Delivery Area 2 Number of disabled children is not as high as DA 1 but provision is required	Delivery Area 3 There is a notable number of disabled children in these areas but less than DA 1 & DA2
Abingdon	Carterton	Chipping Norton
Banbury	Henley-on-Thames / SE Oxfordshire	Kidlington
Bicester	Faringdon	Wallingford
Didcot	Thame	
Oxford City	Wantage	
Witney		

This page is intentionally left blank

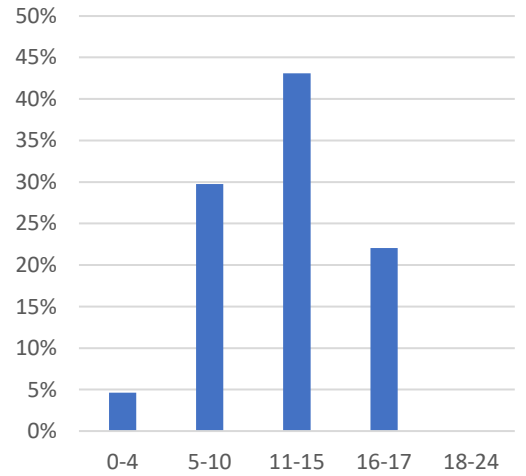


Abingdon (Group 1)

Page 13

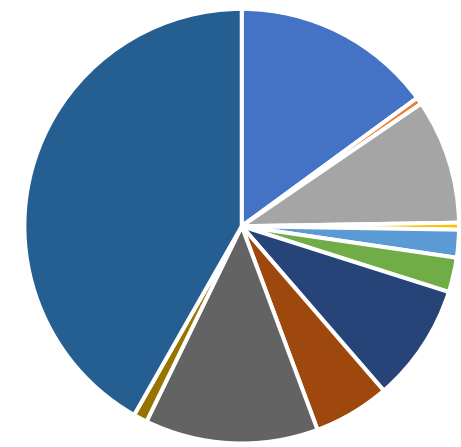
AGE	CYP	%
0-4	9	5%
5-10	58	30%
11-15	84	43%
16-17	43	22%
18-24	0	0%
Total	195	100%

Abingdon Age ranges



- Autistic Spectrum Disorder
- Hearing Impairment
- Moderate Learning Difficulty
- Multi-Sensory Impairment
- Physical Disability
- Profound & Multiple Learning Difficulty
- Severe Learning Difficulty
- Specific Learning Difficulty
- Speech, Language and Communication Needs
- Visual Impairment
- Unknown

Abingdon SEN



Autistic Spectrum Disorder	29	15%
Hearing Impairment	1	1%
Moderate Learning Difficulty	18	9%
Multi-Sensory Impairment	1	1%
Physical Disability	4	2%
Profound & Multiple Learning Difficulty	5	3%
Severe Learning Difficulty	17	9%
Specific Learning Difficulty	11	6%
Speech, Language and Communication Needs	25	13%
Visual Impairment	2	1%
Unknown	81	42%
Grand Total	194	100%

195 total CYP of these 89 are in special school, 43 of these have unknown disability on the register

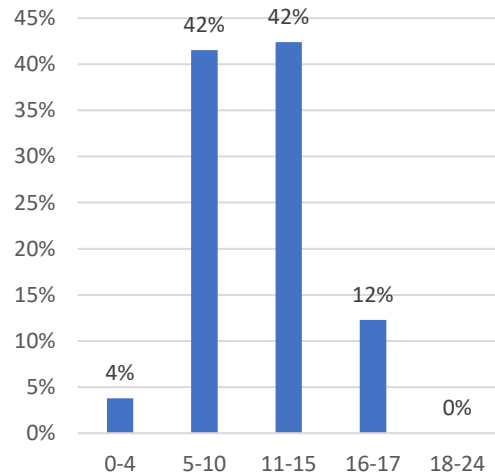


Banbury (Group 1)

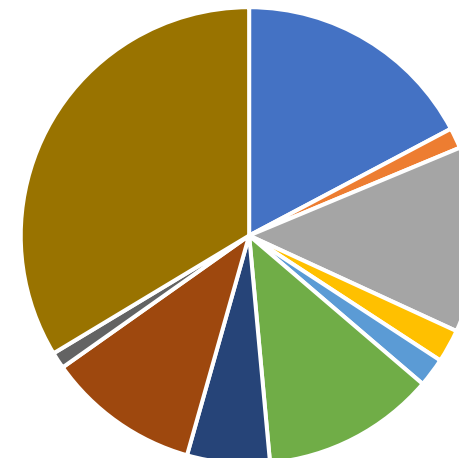
AGES	CYP	%
0-4	13	4%
5-10	142	42%
11-15	145	42%
16-17	42	12%
18-24	0	0%
Total	342	100%

Page 14

Banbury Age ranges



Banbury SEN



- Autistic Spectrum Disorder
- Hearing Impairment
- Moderate Learning Difficulty
- Physical Disability
- Profound & Multiple Learning Difficulty
- Severe Learning Difficulty
- Specific Learning Difficulty
- Speech, Language and Communication Needs
- Visual Impairment
- Unknown

Autistic Spectrum Disorder	59	17%
Hearing Impairment	5	1%
Moderate Learning Difficulty	45	13%
Physical Disability	8	2%
Profound & Multiple Learning Difficulty	7	2%
Severe Learning Difficulty	42	12%
Specific Learning Difficulty	20	6%
Speech, Language and Communication Needs	37	11%
Visual Impairment	4	1%
Unknown	115	34%
Grand Total	342	100%

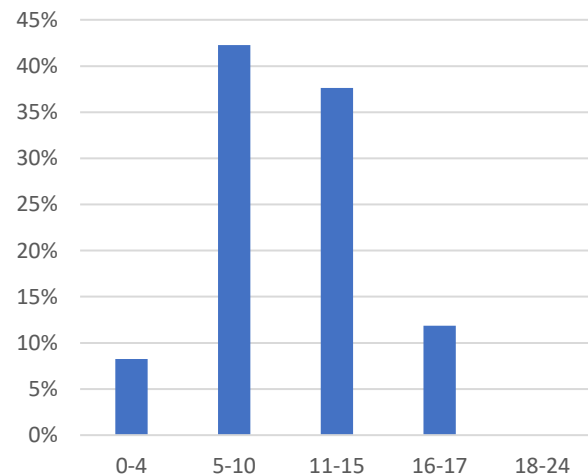
342 total CYP of these 157 are in special school, 72 of these have unknown disability on the register



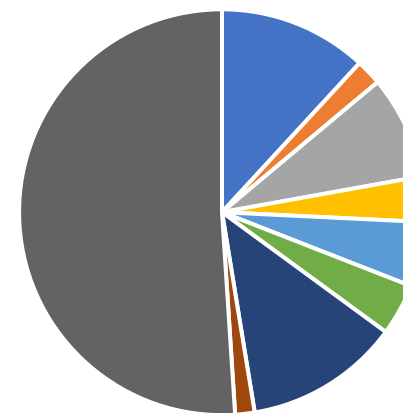
Bicester (Group 1)

AGES	CYP	%
0-4	16	8%
5-10	82	42%
11-15	73	38%
16-17	23	12%
18-24	0	0%
Total	194	100%

Bicester Age ranges



Bicester SEN



- Autistic Spectrum Disorder
- Moderate Learning Difficulty
- Severe Learning Difficulty
- Speech, Language and Communication Needs
- Unknown
- Hearing Impairment
- Physical Disability
- Specific Learning Difficulty
- Visual Impairment

Autistic Spectrum Disorder	23	12%
Hearing Impairment	4	2%
Moderate Learning Difficulty	16	8%
Physical Disability	7	4%
Severe Learning Difficulty	10	5%
Specific Learning Difficulty	8	4%
Speech, Language and Communication Needs	24	12%
Visual Impairment	3	2%
Unknown	99	51%
Grand Total	194	100%

192 total CYP of these 96 are in special school, 60 of these have unknown disability on the register

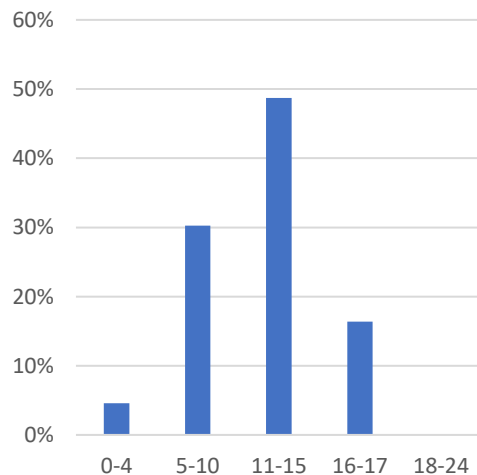


Didcot (Group 1)

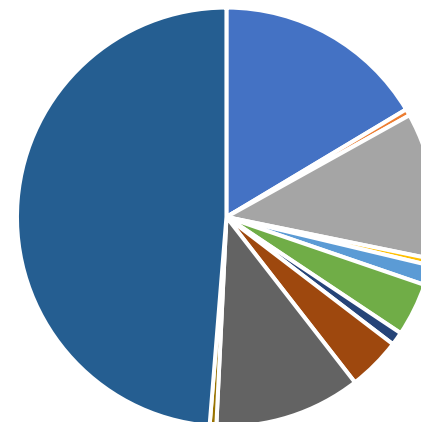
page 16

AGE	CYP	%
0-4	9	5%
5-10	59	30%
11-15	95	49%
16-17	32	16%
18-24	0	0%
Total	195	100%

Didcot Age ranges



Didcot SEN



- Autistic Spectrum Disorder
- Hearing Impairment
- Moderate Learning Difficulty
- Physical Disability
- Profound & Multiple Learning Difficulty
- Severe Learning Difficulty
- Social, Emotional and Mental Health
- Specific Learning Difficulty
- Speech, Language and Communication Needs
- Visual Impairment
- Unknown

Autistic Spectrum Disorder	32	16%
Hearing Impairment	1	1%
Moderate Learning Difficulty	22	11%
Physical Disability	1	1%
Profound & Multiple Learning Difficulty	3	2%
Severe Learning Difficulty	8	4%
Social, Emotional and Mental Health	2	1%
Specific Learning Difficulty	8	4%
Speech, Language and Communication Needs	22	11%
Visual Impairment	1	1%
Unknown	95	49%
Grand Total	195	100%

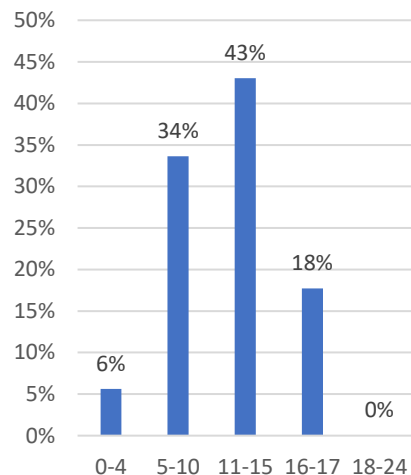
195 total CYP of these 89 are in special school, 46 of these have unknown disability on the register



Oxford City (Group 1)

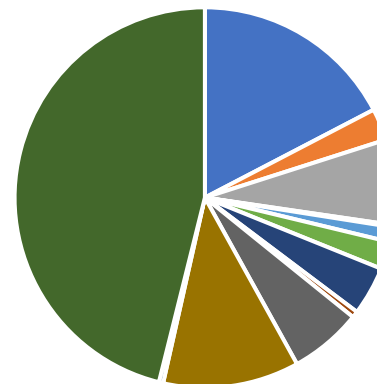
AGE	CYP	%
0-4	31	6%
5-10	186	34%
11-15	238	43%
16-17	98	18%
18-24	0	0%
Total	553	100%

Oxford Age ranges



553 total CYP of these 205 are in special school, 104 of these have unknown disability on the register

Oxford SEN



- Autistic Spectrum Disorder
- Hearing Impairment
- Moderate Learning Difficulty
- Multi-Sensory Impairment
- Physical Disability
- Profound & Multiple Learning Difficulty
- Severe Learning Difficulty
- Social, Emotional and Mental Health
- Specific Learning Difficulty
- Speech, Language and Communication Needs
- Visual Impairment
- Unknown

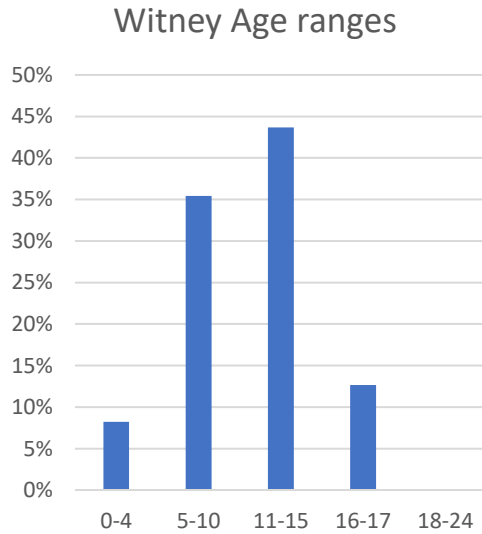
Autistic Spectrum Disorder	96	17%
Hearing Impairment	15	3%
Moderate Learning Difficulty	40	7%
Multi-Sensory Impairment	1	0%
Physical Disability	7	1%
Profound & Multiple Learning Difficulty	13	2%
Severe Learning Difficulty	23	4%
Social, Emotional and Mental Health	3	1%
Specific Learning Difficulty	34	6%
Speech, Language and Communication Needs	64	12%
Visual Impairment	2	0%
Unknown	255	46%
Grand Total	553	100%



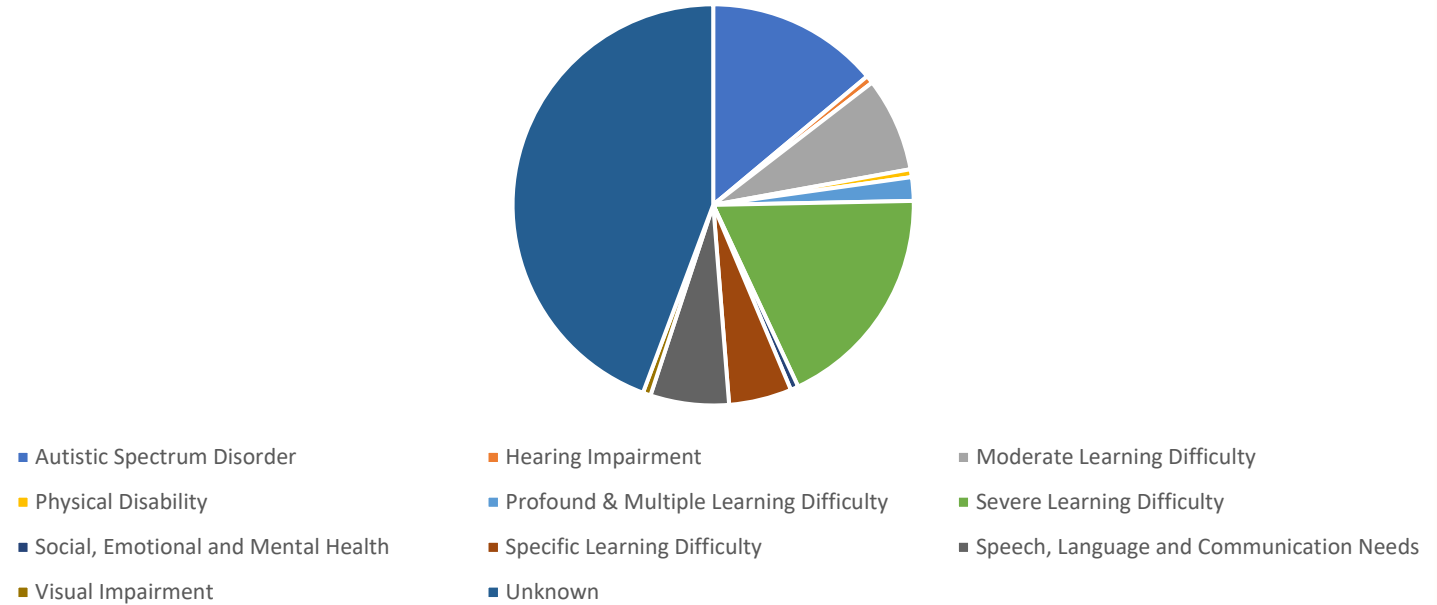
Witney (Group 1)

AGE	CYP	%
0-4	13	8%
5-10	56	35%
11-15	69	44%
16-17	20	13%
18-24	0	0%
Total	158	100%

Age 18



Witney SEN



158 total CYP of these 77 are in special school, 25 of these have unknown disability on the register

Autistic Spectrum Disorder	22	14%
Hearing Impairment	1	1%
Moderate Learning Difficulty	12	8%
Physical Disability	1	1%
Profound & Multiple Learning Difficulty	3	2%
Severe Learning Difficulty	29	18%
Social, Emotional and Mental Health	1	1%
Specific Learning Difficulty	8	5%
Speech, Language and Communication Needs	10	6%
Visual Impairment	1	1%
Unknown	70	44%
Grand Total	158	100%

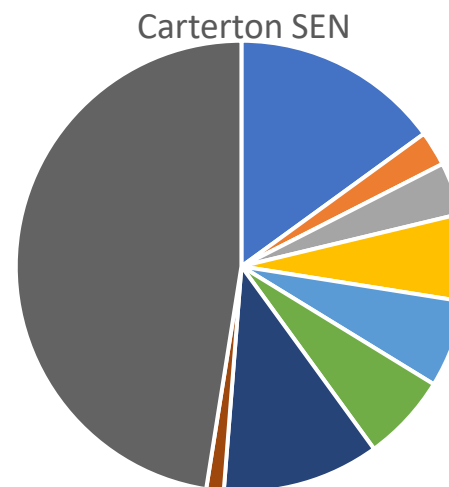
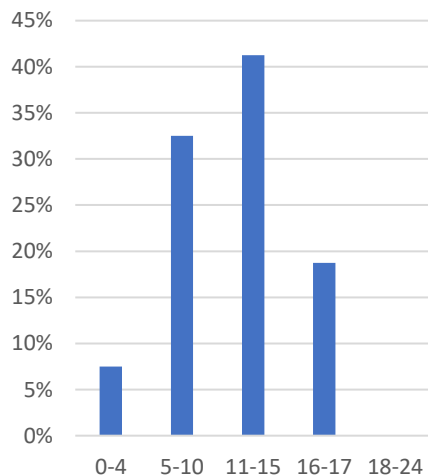


Carterton (Group 2)

AGE	CYP	%
0-4	6	8%
5-10	26	33%
11-15	33	41%
16-17	15	19%
18-24	0	0%
Total	80	100%

Page 19

Carterton Age ranges



- Autistic Spectrum Disorder
- Hearing Impairment
- Moderate Learning Difficulty
- Physical Disability
- Severe Learning Difficulty
- Specific Learning Difficulty
- Speech, Language and Communication Needs
- Visual Impairment
- Unknown

Autistic Spectrum Disorder	12	15%
Hearing Impairment	2	3%
Moderate Learning Difficulty	3	4%
Physical Disability	5	6%
Severe Learning Difficulty	5	6%
Specific Learning Difficulty	5	6%
Speech, Language and Communication Needs	9	11%
Visual Impairment	1	1%
Unknown	38	48%
Grand Total	80	100%

80 total CYP of these 31 are in special school, 17 of these have unknown disability on the register

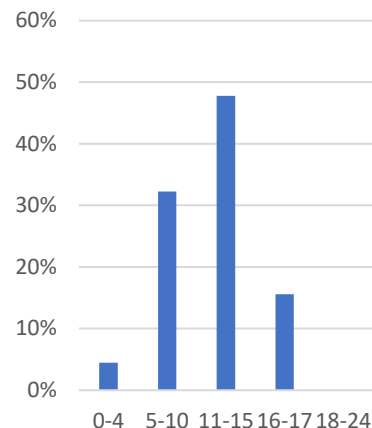


Faringdon (Group 2)

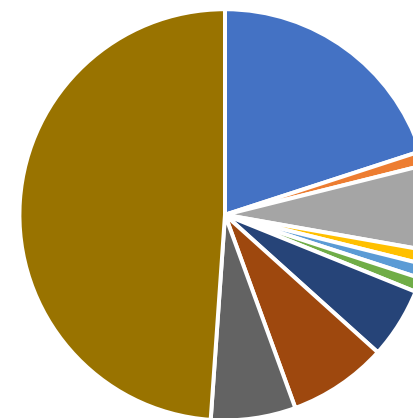
Page 20

AGE	CYP	%
0-4	4	4%
5-10	29	32%
11-15	43	48%
16-17	14	16%
18-24	0	0%
Total	90	100%

Faringdon Age ranges



Faringdon SEN



- Autistic Spectrum Disorder
- Hearing Impairment
- Moderate Learning Difficulty
- Multi-Sensory Impairment
- Physical Disability
- Profound & Multiple Learning Difficulty
- Severe Learning Difficulty
- Specific Learning Difficulty
- Speech, Language and Communication Needs
- Unknown

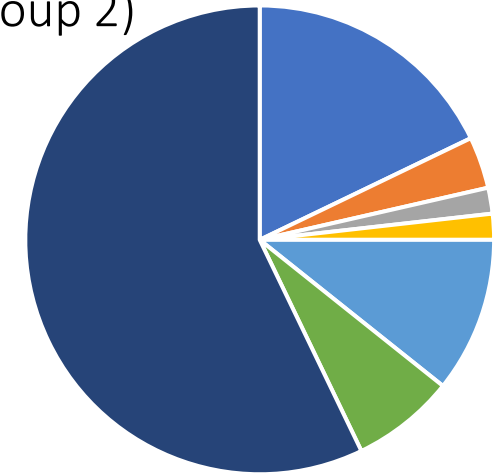
Autistic Spectrum Disorder	18	20%
Hearing Impairment	1	1%
Moderate Learning Difficulty	6	7%
Multi-Sensory Impairment	1	1%
Physical Disability	1	1%
Profound & Multiple Learning Difficulty	1	1%
Severe Learning Difficulty	5	6%
Specific Learning Difficulty	7	8%
Speech, Language and Communication Needs	6	7%
Unknown	44	49%
Grand Total	90	100%

90 total CYP of these 23 are in special school, 13 of these have unknown disability on the register



Henley / South-East Oxfordshire (Group 2)

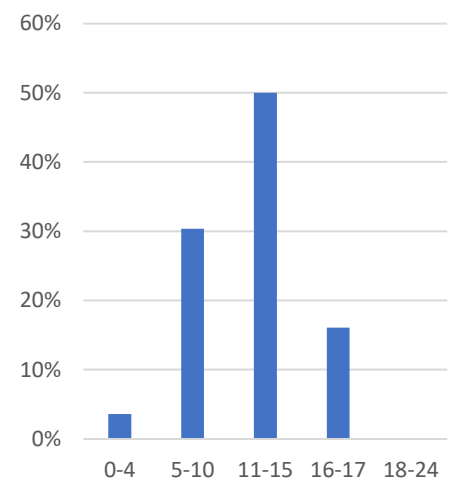
Henley SEN



- Autistic Spectrum Disorder
- Moderate Learning Difficulty
- Multi-Sensory Impairment
- Physical Disability
- Severe Learning Difficulty
- Speech, Language and Communication Needs
- Unknown

Autistic Spectrum Disorder	10	18%
Moderate Learning Difficulty	2	4%
Multi-Sensory Impairment	1	2%
Physical Disability	1	2%
Severe Learning Difficulty	6	11%
Speech, Language and Communication Needs	4	7%
Unknown	32	57%
Grand Total	56	100%

Henley Age ranges



AGE	CYP	%
0-4	2	4%
5-10	17	30%
11-15	28	50%
16-17	9	16%
18-24	0	0%
Total	56	100%

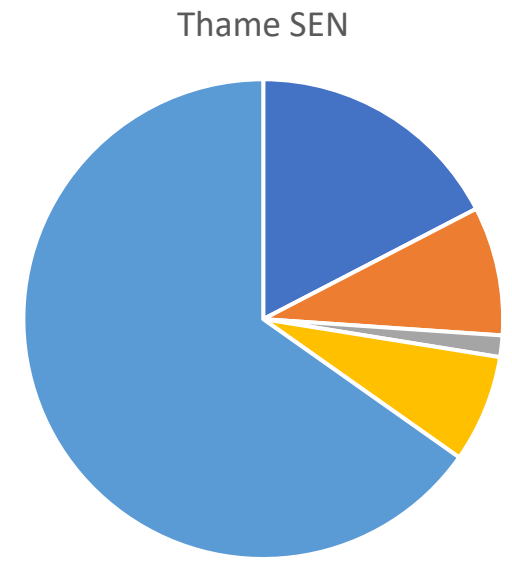
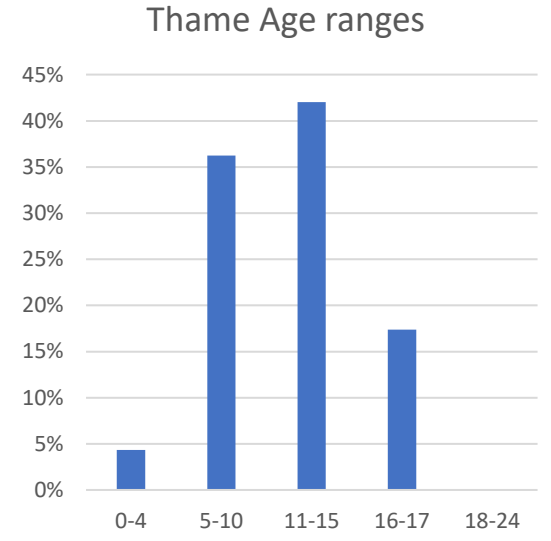
Page 21

56 total CYP of these 18 are in special school, 11 of these have unknown disability on the register



Thame (Group 2)

AGE	CYP	%
0-4	3	4%
5-10	25	36%
11-15	29	42%
16-17	12	17%
18-24	0	0%
Total	69	100%



- Autistic Spectrum Disorder
- Moderate Learning Difficulty
- Profound & Multiple Learning Difficulty
- Speech, Language and Communication Needs
- Unknown

69 total CYP of these 35 are in special school, 18 of these have unknown disability on the register

Autistic Spectrum Disorder	12	17%
Moderate Learning Difficulty	6	9%
Profound & Multiple Learning Difficulty	1	1%
Speech, Language and Communication Needs	5	7%
Unknown	45	65%
Grand Total	69	100%

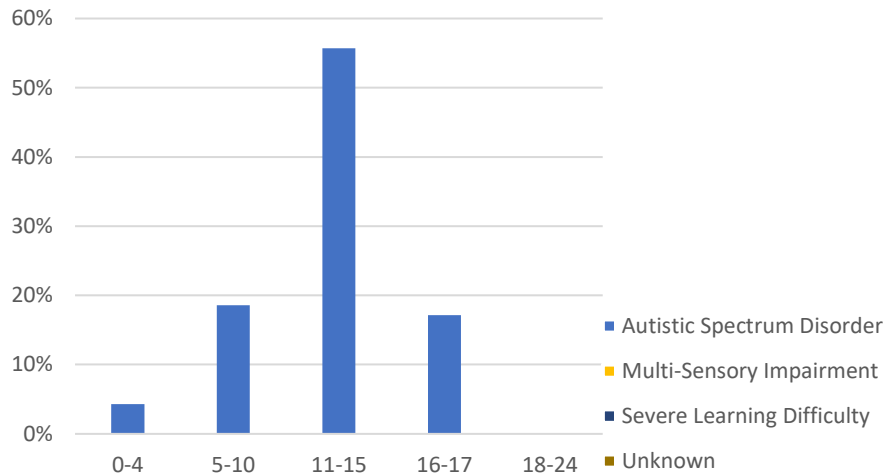


Wantage (Group 2)

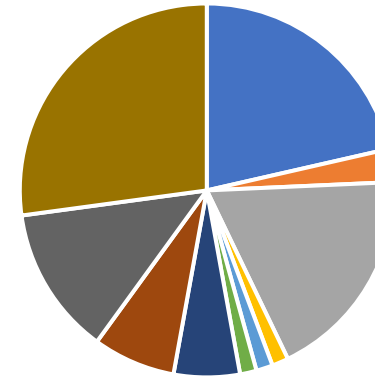
AGE	CYP	%
0-4	3	4%
5-10	13	19%
11-15	39	56%
16-17	12	17%
18-24	0	0%
Total	70	100%

Page 23

Wantage Age ranges



Wantage SEN



- Hearing Impairment
- Moderate Learning Difficulty
- Physical Disability
- Profound & Multiple Learning Difficulty
- Specific Learning Difficulty
- Speech, Language and Communication Needs
- Autistic Spectrum Disorder
- Multi-Sensory Impairment
- Severe Learning Difficulty
- Unknown

70 total CYP of these 28 are in special school, 7 of these have unknown disability on the register

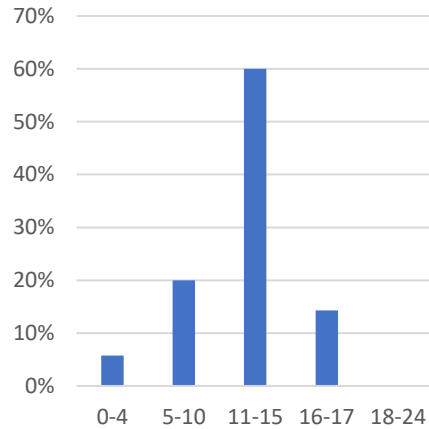
Autistic Spectrum Disorder	15	21%
Hearing Impairment	2	3%
Moderate Learning Difficulty	13	19%
Multi-Sensory Impairment	1	1%
Physical Disability	1	1%
Profound & Multiple Learning Difficulty	1	1%
Severe Learning Difficulty	4	6%
Specific Learning Difficulty	5	7%
Speech, Language and Communication Needs	9	13%
Unknown	19	27%
Grand Total	70	100%

Chipping Norton (Group 3)

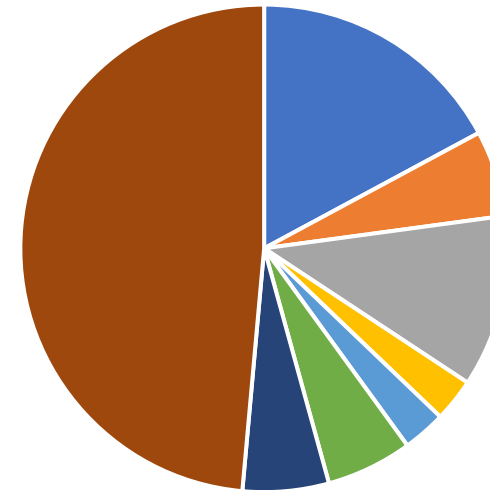
AGE	CYP	%
0-4	2	6%
5-10	7	20%
11-15	21	60%
16-17	5	14%
18-24	0	0%
Total	35	100%

Page 24

Chipping Norton Age ranges



Chipping Norton SEN



- Autistic Spectrum Disorder
- Hearing Impairment
- Moderate Learning Difficulty
- Physical Disability
- Severe Learning Difficulty
- Specific Learning Difficulty
- Speech, Language and Communication Needs
- unknown

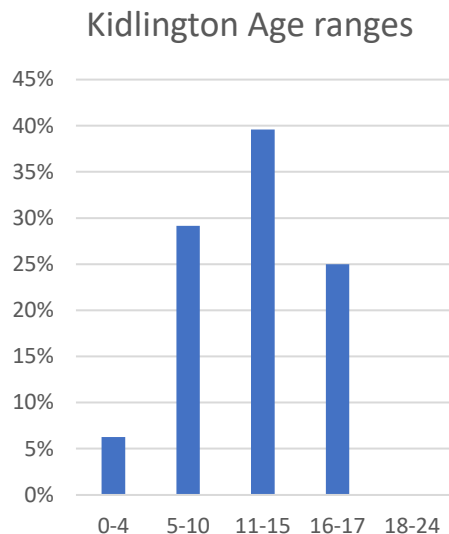
35 total CYP of these 18 are in special school, 11 of these have unknown disability on the register

Autistic Spectrum Disorder	6	17%
Hearing Impairment	2	6%
Moderate Learning Difficulty	4	11%
Physical Disability	1	3%
Severe Learning Difficulty	1	3%
Specific Learning Difficulty	2	6%
Speech, Language and Communication Needs	2	6%
unknown	17	49%
Grand Total	35	100%

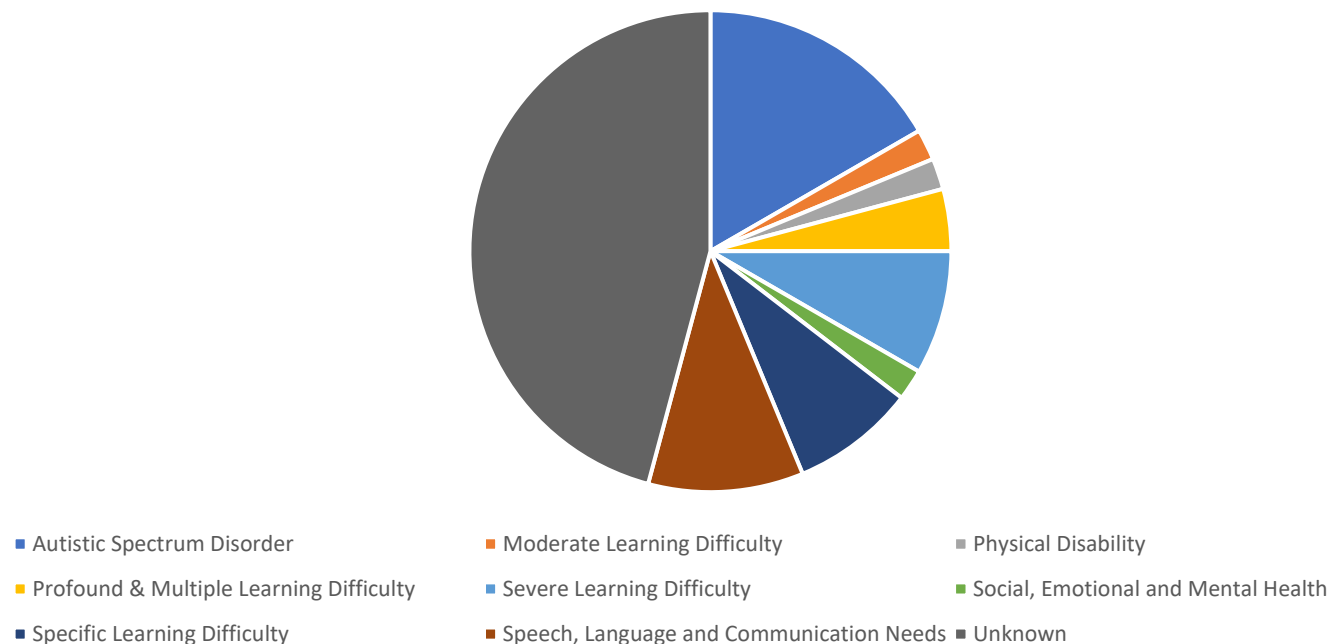


Kidlington (Group 3)

AGE	CYP	%
0-4	3	6%
5-10	14	29%
11-15	19	40%
16-17	12	25%
18-24	0	0%
Total	48	100%



Kidlington SEN



Autistic Spectrum Disorder	8	17%
Moderate Learning Difficulty	1	2%
Physical Disability	1	2%
Profound & Multiple Learning Difficulty	2	4%
Severe Learning Difficulty	4	8%
Social, Emotional and Mental Health	1	2%
Specific Learning Difficulty	4	8%
Speech, Language and Communication Needs	5	10%
Unknown	22	46%
Grand Total	48	100%

48 total CYP of these 27 are in special school, 14 of these have unknown disability on the register

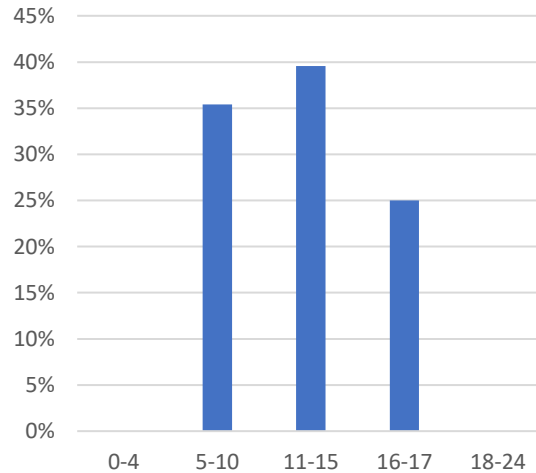


Wallingford (Group 3)

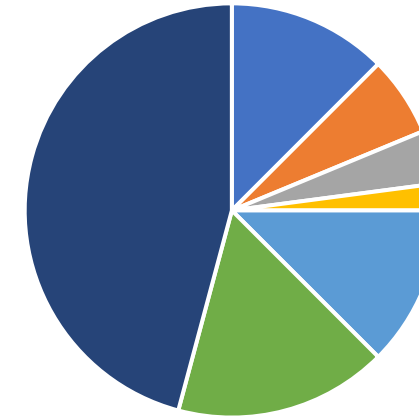
Page 26

AGE	CYP	%
0-4	0	0%
5-10	17	35%
11-15	19	40%
16-17	12	25%
18-24	0	0%
Total	48	100%

Wallingford Age ranges



Wallingford SEN



- Autistic Spectrum Disorder
- Moderate Learning Difficulty
- Severe Learning Difficulty
- Social, Emotional and Mental Health
- Specific Learning Difficulty
- Speech, Language and Communication Needs
- unknown

Autistic Spectrum Disorder	6	13%
Moderate Learning Difficulty	3	6%
Severe Learning Difficulty	2	4%
Social, Emotional and Mental Health	1	2%
Specific Learning Difficulty	6	13%
Speech, Language and Communication Needs	8	17%
unknown	22	46%
Grand Total	48	100%

48 total CYP of these 21 are in special school, 9 of these have unknown disability on the register